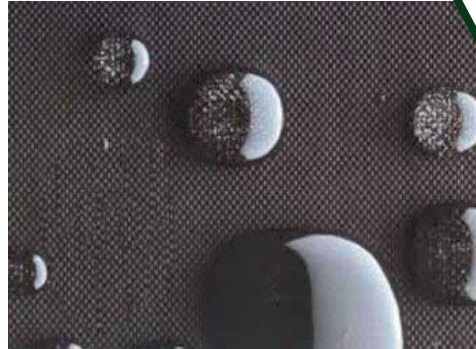
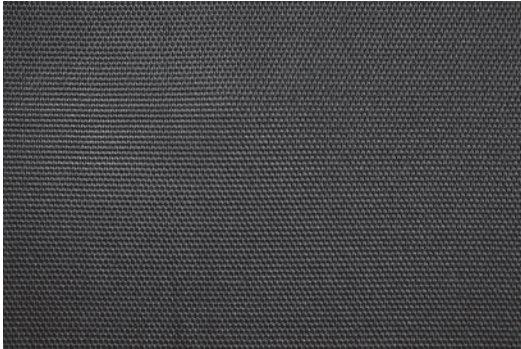


Specialist Geomembranes

Technical Data Sheet

Landflex EP100 - 1.0mm EPDM



The information herein is based upon data obtained by the manufacturer and is considered accurate. However, no warranty is expressed or implied regarding the accuracy of this data. This information is furnished upon the condition that the person receiving it shall evaluate its suitability for the specific application.

Material Properties	Unit	Test Method	Typical Values
Tensile strength	MPa	EN ISO 527-3	9.0
Elongation	%	EN ISO 527-3	300
Static puncture	kN	EN ISO 12236	<1.00mm: NPD 1.00mm: 0.75 1.20mm: 0.90 1.50mm: 1.13
Water permeability	m ³ /(m ² *day)	EN 14150	<10 ⁻⁶
Weathering / UV resistance	%	EN 12224	<25
Micro-organisms	%	EN 12225	<25
Oxidation	%	EN 14575	<25
Environmental stress cracking	-	EN 14576	NPD
Dangerous substances	-	EU construction directive	No dangerous substances
Colour	-	-	Black
Roll width	m	-	1.7
Roll length	m	-	30
Material thickness	mm	-	1.0



Example use: Pond linings



Example use:
Waterproof green
roof linings



Butyl Products Group Ltd.

Lingfield House, 11 Radford Crescent, Billericay,
Essex, CM12 0DW, United Kingdom.

T: +44 (0) 1277 653 281 F: +44 (0) 1277 657 921

E: enquiries@butylproducts.co.uk W: butylproducts.co.uk

E: enquiries@butek-landline.co.uk W: butek-landline.co.uk

Butek Landline

Containment Solutions

Spec. 10 Rev. B