

# Emergency Aid Camp Infrastructure

## Fuel Bladder Tanks

Our fuel bladder (or pillow) tanks have been developed especially for the harsh emergency aid environment, and are supplied with special outlets, valves and vents to suit use with diesel, Jet fuel and other liquid chemicals\*\*

The tanks can be deployed on any area of flat ground that has been cleared of debris.

- Suitable for ALL climates
- Installed by 2 people in around 15 minutes
- Rapidly deployed storage for local fuels
- All tanks supplied packed in an ISPM15 heat treated plywood case suitable for export
- Includes all necessary tools, instruction manual and repair kit

### Accessories -

- Low voltage electric fuel transfer pumps & diesel driven fuel handling pumps
- Special sizes and bespoke outlet configuration available upon request
- Easy-Up Berms / Bunds are manufactured in accordance with the size of the tank.
- A wide range of fuel handling hoses & fittings are available

### NEW in 2018

- VEGA Fuel Monitoring System with stabilising plate



*Reinforced corner mouldings and integral tie down holes*



*2" BSP outlet and plug*



*VEGA Fuel Monitoring System Stabilising Plate*



*Above: 2 x 100m<sup>3</sup> Bladder / Berm system installed Malawi, 2018; Image courtesy Aggreko Rental Power Services*

\*\* Please refer to our Chemical resistance charts when considering suitability of these bladders for specific fuels / chemicals



### Butyl Products Ltd.

Lingfield House, 11 Radford Crescent, Billericay, Essex,  
CM12 0DW, United Kingdom. T: +44 (0) 1277 653 281  
F: +44 (0) 1277 657 921 E: [enquiries@butylproducts.co.uk](mailto:enquiries@butylproducts.co.uk)  
W: [butylproducts.co.uk](http://butylproducts.co.uk)

# Emergency Aid Camp Infrastructure

## Technical Data

### Bladder Construction

Our bladders are manufactured from 1300g/m<sup>2</sup> Polyurethane and supplied with reinforced corner mouldings and positioning straps.

### Bladder Fittings

Each standard bladder is fitted with:

1 x 2.5" BSP (F) outlet for a mushroom vent or flame tube assembly. Larger bladders above 60,000 litres capacity are fitted with 2 x 2.5" BSP(F) outlets.

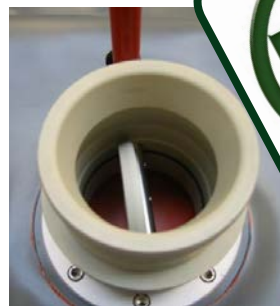
Standard bladders are fitted with 2 x 2" BSP(F) outlets, one with a plug and one with a 2" V50 butterfly valve.

1 x 2" Port for VEGA Fuel Monitoring System.

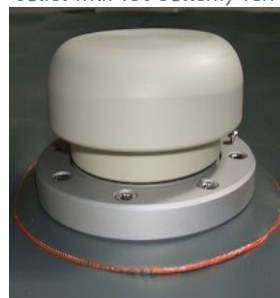
### New development for 2018

The VEGA Fuel Monitoring System is now fully compatible with Butyl Group fuel bladders.

Each bladder is supplied with an additional integrated port dedicated to the Vega system, enabling easy fitment of the Butyl Group designed stabilising plate and allowing the system to be assembled in minutes.



2" outlet with V50 butterfly valve



Mushroom vent



VEGA Port

Capacity (litres)	Tank Layflat size (m)	Tank size filled (m)	Groundsheet size (m)	Tank weight (unpacked, empty)
1,000	2.60 x 1.53	2.10 x 1.00 x 0.50	4.00 x 2.50	33kg
2,000	2.60 x 2.29	2.00 x 1.69 x 0.60	4.00 x 3.30	38kg
5,000	3.80 x 3.06	3.10 x 2.36 x 0.70	5.00 x 4.00	53kg
10,000	4.00 x 4.59	3.00 x 3.59 x 1.00	5.00 x 5.50	70kg
15,000	5.00 x 4.59	3.90 x 3.49 x 1.10	6.00 x 5.50	82kg
20,000	5.20 x 5.35	4.00 x 4.15 x 1.20	6.00 x 6.50	99kg
30,000	7.20 x 5.35	5.90 x 4.05 x 1.30	8.50 x 6.50	129kg
40,000	7.20 x 6.55	5.90 x 5.25 x 1.30	8.50 x 7.50	155kg
50,000	9.00 x 6.12	7.50 x 4.62 x 1.50	10.00 x 7.00	212kg
60,000	8.30 x 8.00	6.80 x 6.50 x 1.50	10.00 x 9.00	240kg
75,000	9.50 x 8.36	8.00 x 6.86 x 1.50	10.50 x 10.00	284kg
100,000	12.20 x 8.36	10.70 x 6.86 x 1.50	13.50 x 10.00	361kg
200,000	11.00 x 15.60	9.50 x 14.10 x 1.50	12.50 x 16.50	614kg



### Butyl Products Ltd.

Lingfield House, 11 Radford Crescent, Billericay, Essex,  
CM12 0DW, United Kingdom. T: +44 (0) 1277 653 281  
F: +44 (0) 1277 657 921 E: [enquiries@butylproducts.co.uk](mailto:enquiries@butylproducts.co.uk)  
W: [butylproducts.co.uk](http://butylproducts.co.uk)