

Emergency Aid Camp Infrastructure

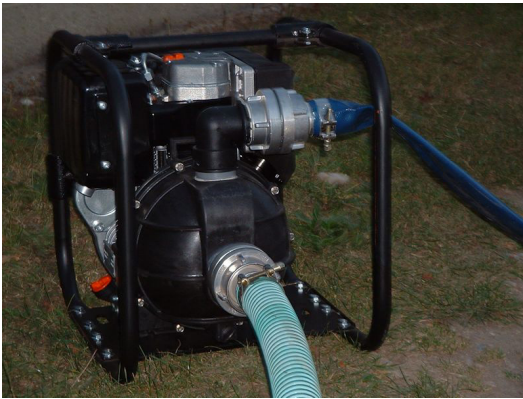


Kestrel 5000

2" General Purpose Lightweight Portable Self Priming Pump with Lombardini 15LD225 Diesel Engine

Applications include:

Dewatering (fresh & seawater) - Chemical Handling - Potable Water Supply

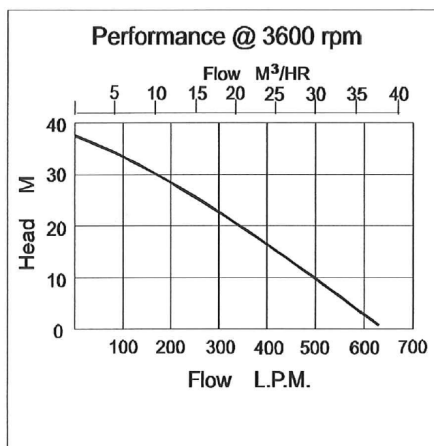
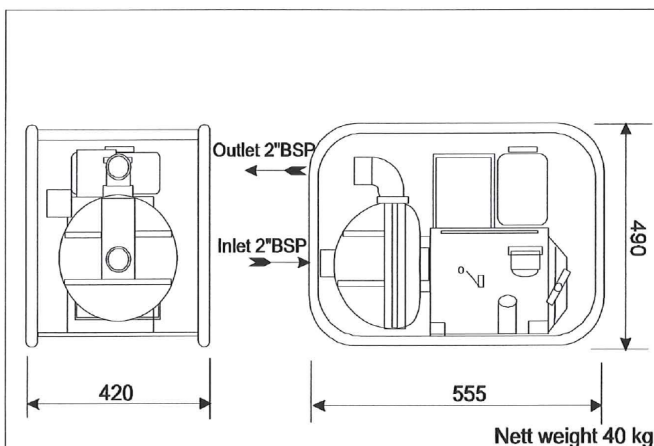


- Glass reinforced polycarbonate construction
- Semi open clog resistant impeller
- Solids Handling to 8 mm Ø
- Integral non return valve
- Self priming to 7m
- Carbon/Carbon Mechanical Seal
- Screwed BSP male connections
- 2 x 50mm female hose couplings with clips
- Steel rollover frame with anti vibration mounts.

Powered by a Lombardini single cylinder 4 stroke air cooled diesel engine model 15LD225, developing 3.1 kW at a nominal 3600 rpm complete with recoil start, 3 litre 3 hour fuel tank, throttle control, replaceable element air, fuel and oil filters and exhaust silencer. Set is supplied with Pump and Engine Operating and Instruction Manuals

Standard Options:

- A. Individual plywood case packing.
- B. Pump spares for 1000 hours normal operation.
- C. Engine spares for 1000 hours normal operation.
- D. Hose kit
- E. Trailer
- F. Quick couplings



Butyl Products Ltd.

Lingfield House, 11 Radford Crescent, Billericay, Essex,
CM12 0DW, United Kingdom. T: +44 (0) 1277 653 281

F: +44 (0) 1277 657 921 E: enquiries@butylproducts.co.uk

W: butylproducts.co.uk