

Camp Infrastructure Emergency Aid



BP-EW403D Purification Unit 4m³/hr

The principle used by this unit is based on the standard process of physio-chemical treatment: coagulation, flocculation, decantation with filtration over 2 layers followed by absorption in activated carbon. Final disinfection is by injection of a chlorine based solution. The unit is completely autonomous, requiring no electrical power in order to operate.



Composition

- Diesel Powered Pump
- Coagulation / Flocculation frame with slow dissolving tablets (aluminium sulphate, iron sulphate, anionic and cationic polymer)
- Flocculation / Decantation through 80m layflat hose
- Filtration frame with injected thermo-plastic filter equipped with half symmetrical Guillemin fittings (Storz, Barcelona on request)
- Disinfection frame with injected thermo-plastic filter equipped with half symmetrical Guillemin fittings, Venturi (HTH) or proportional (NaDCC) dosing system with flow meter and counter



Characteristics

Frame	Material	Sizes (mm)	Weight (kg)	Filtration Media	Filtration speed (m/h) based on flow		
					2m ³ /h	4m ³ /h	6m ³ /h
Filtration	Aluminium	600 x 600 x 1160	118	Silex 2-4mm	10.2	20.3	30.6
Disinfection	Aluminium	800 x 600 x 1160	67	Silex 0.7-1.3mm	Contact Time		
				Hydro-anthracite 0.8-1.6mm			
Coag./Floc.	Aluminium	740 x 500 x 400	20	Activated carbon 8 x 30 mesh	3.5mn	1.6mn	1.07mn

Since it has no electrical or electronic parts the BP-EW403D can be operated in almost any environment (except severe frost conditions). It can be easily set up and operational in under an hour. All packaging (wooden crates and pallet sections) are ISPM15 compliant for all modes of transport and are completely re-usable.

*This document is not a contractual commitment and is intended for information purposes only. The manufacturer reserves the right to modify its equipment at any time.



Butyl Products Ltd.

Lingfield House, 11 Radford Crescent, Billericay, Essex, CM12 0DW, United Kingdom.

T: +44 (0) 1277 653 281

E: enquiries@butylproducts.co.uk W: butylproducts.co.uk
E: enquiries@butek-landline.co.uk W: butek-landline.co.uk

Butek Landline

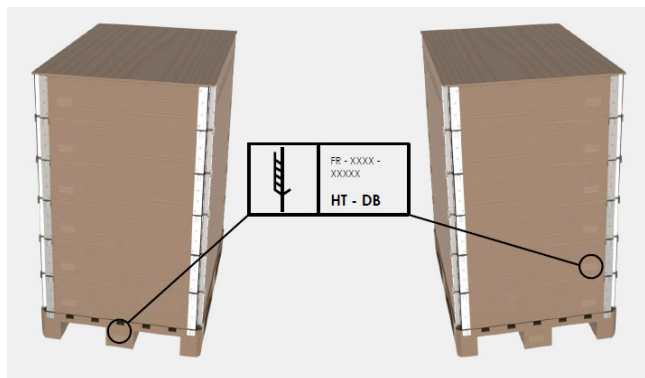
Containment Solutions

Camp Infrastructure Emergency Aid



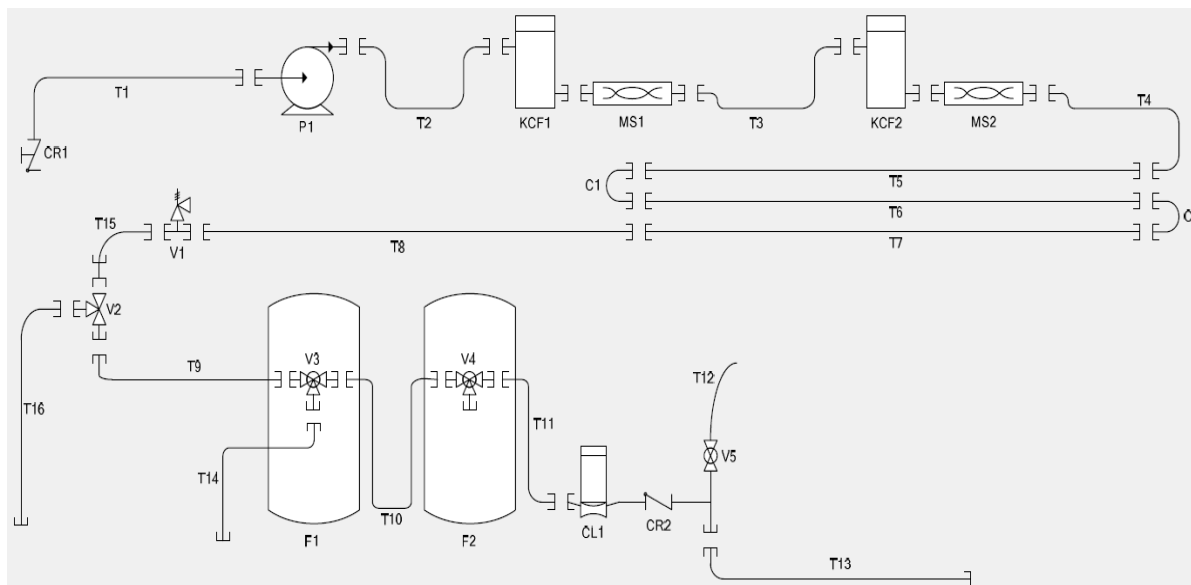
BP-EW403D Purification Unit 4m³/hr

Packaging



Box No.	Sizes (cm)	Volume (m ³)	Weight (kg)
1	120 x 80 x 135	1,296	339
2	120 x 80 x 135	1,296	206

Installation Scheme



C1...3	Redirection elbow	F2	Activated carbon filter	T2, T3, T9, T10, T13	3m PVC pipe DN55	T15	1m PVC pipe DN55
CL1	Chlorinator or proportional dosing pump	KCF1, KCF2	Coagulation kit	T5...T8	20m flat hose DN50	V1	Safety valve
CR1	Foot valve-strainer	MS1, MS2	Static mixers	T14, T16	3m green PVC pipes DN55	V2	3 way valve
CR2	Non return valve	P1	Motorpump	T11	1.5m PVC pipe DN55	V3, V4	Multiport valves
F1	Multimedia filter	T1, T4	6m PVC pipe DN55	T12	1m PVC pipe DN19	V5	Sample valve



Butyl Products Ltd.

Lingfield House, 11 Radford Crescent, Billericay,
Essex, CM12 0DW, United Kingdom.

T: +44 (0) 1277 653 281

E: enquiries@butylproducts.co.uk W: butylproducts.co.uk
E: enquiries@butek-landline.co.uk W: butek-landline.co.uk

Butek Landline

Containment Solutions